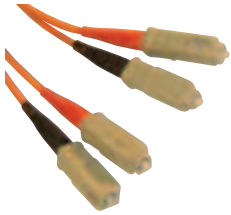


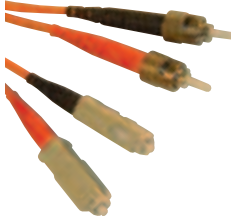
Fiber Optic Cable Assemblies

62.5/125 Multimode Fiber Optic Cables - PVC



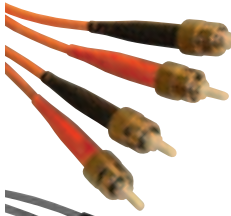
SC/SC Duplex Cables

AFOCC001	1m	\$36.50
AFOCC002	2m	\$38.00
AFOCC003	3m	\$40.00
AFOCC005	5m	\$42.00
AFOCC007	7m	\$53.00
AFOCC010	10m	\$58.00



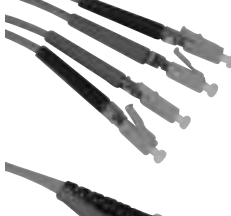
ST/SC Duplex Cables

AFOCT001	1m	\$33.00
AFOCT002	2m	\$35.00
AFOCT003	3m	\$37.00
AFOCT005	5m	\$43.00
AFOCT007	7m	\$46.00
AFOCT010	10m	\$52.00



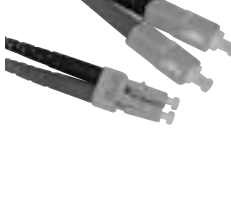
ST/ST Duplex Cables

AFOTT001	1m	\$27.00
AFOTT002	2m	\$29.50
AFOTT003	3m	\$31.00
AFOTT005	5m	\$36.00
AFOTT010	10m	\$47.00



LC/LC Duplex Cables

FO-LL001	1m	\$52.00
FO-LL003	3m	\$58.00
FO-LL005	5m	\$65.00
FO-LL007	7m	\$70.00
FO-LL010	10m	\$80.00

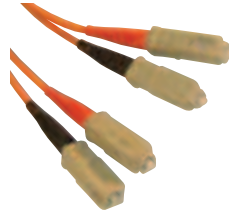


LC/SC Duplex

FO-LC001	1m	\$52.00
FO-LC003	3m	\$54.00
FO-LC005	5m	\$62.00
FO-LC007	7m	\$67.00
FO-LC010	10m	\$75.00

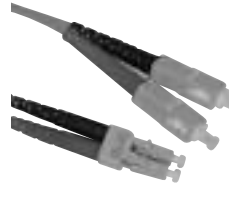
50/125 Multimode Duplex Fiber Optic Cable Assemblies - PVC

Bulk and Custom
Fiber Cables Available!
Please Call!



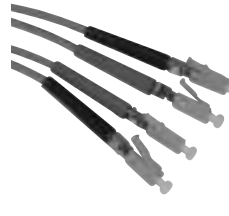
SC/SC

FO-CC5001	1m	\$39.00
FO-CC5002	2m	\$40.00
FO-CC5003	3m	\$42.00
FO-CC5005	5m	\$47.00
FO-CC5007	7m	\$52.00
FO-CC5010	10m	\$58.00



SC/LC

FO-CL5001	1m	\$53.00
FO-CL5002	2m	\$55.00
FO-CL5003	3m	\$58.00
FO-CL5005	5m	\$64.00
FO-CL5007	7m	\$69.00
FO-CL5010	10m	\$77.00



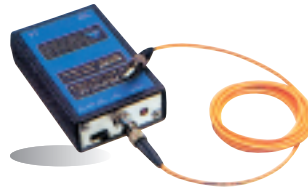
LC/LC

FO-LL5001	1m	\$63.00
FO-LL5002	2m	\$66.00
FO-LL5003	3m	\$68.00
FO-LL5005	5m	\$73.00
FO-LL5007	7m	\$79.00
FO-LL5010	10m	\$87.00

MTRJ Cables Available – Please Call!
Fiber Wall Mount Panel – See page 44

Bright Pulsing Light Source for Testing Fiber Optic Cables

DXL10
\$120.00

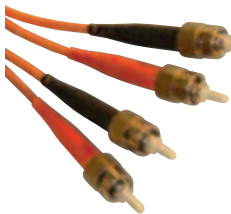


It is important to check fiber optic cables for continuity both on the roll and after installation. This visible LED light source connects to one end of a fiber optic cable and is bright enough to be easily seen at the other end, yet won't hurt your eyes. Signal can be set for either steady or unique flashing mode, which makes tracing cables easier in a crowded cabinet. Easily connects to most 2.5mm ferrule F-O couplers - ST, SC, RSD, and FSD. Uses one 9 V battery (included) Compact size 10.2 x 6.1 x 2.5 cm (4.0 x 2.4 x 1.0 in)

DXL10 Fiber Optic Cable test tool

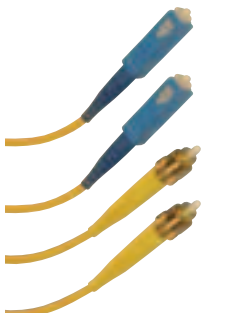
\$120.00

Singlemode Fiber Optic Cable Assemblies



ST/ST Cables

AFSTT001	ST-ST Duplex, PVC, 1m	\$51.00
AFSTT002	ST-ST Duplex, PVC, 2m	\$53.00
AFSTT005	ST-ST Duplex, PVC, 5m	\$60.00
AFSTT010	ST-ST Duplex, PVC, 10m	\$72.00



ST/SC Cables

AFSCT001	ST-SC Duplex, PVC, 1m	\$55.00
AFSCT003	ST-SC Duplex, PVC, 3m	\$59.00
AFSCT005	ST-SC Duplex, PVC, 5m	\$64.00
AFSCT010	ST-SC Duplex, PVC, 10m	\$75.00

LC Cable
Assemblies Available!
Please Call!



SC/SC Cables

AFSCC001	SC-SC Duplex, PVC, 1m	\$57.00
AFSCC002	SC-SC Duplex, PVC, 2m	\$59.00
AFSCC005	SC-SC Duplex, PVC, 5m	\$66.00
AFSCC010	SC-SC Duplex, PVC, 10m	\$79.00



Fiber Couplers/Adapters

Link ST and SC fiber cables together with our fiber couplers and adapters.

DC02213	ST-ST Coupler Simplex	\$5.00
DC02205	ST-ST Coupler Duplex	\$32.00
CUS7406	ST-ST Coupler Panel Mount	\$19.25
CUS5282	ST-FDDI Coupler Panel Mount	\$22.50
DC02214	SC-SC Coupler Simplex	\$8.00
DC02206	SC-SC Coupler Duplex	\$12.00
DC02190	ST-SC Coupler Simplex	\$8.00
DC02191	ST-SC Coupler Duplex	\$12.00
CUS7873	ST(F)-SC(M) Adapter Simplex	\$48.00
CUS8661	ST(M)-SC(F) Adapter Simplex	\$79.75

HST, PST AND GST NOT INCLUDED IN PRICES SHOWN



AlteCon
Data Communications Inc.

Phone: (905) 677-6500
Fax: (905) 677-6505
E-Mail: sales@altecon.com

CAT 5e/6 Patch Cables / Couplers

CAT 5e and CAT 6 Molded Snagless Patch Cables

CAT 5e Molded Patch Cables (black, blue, grey, green, orange, red & yellow)
 Boot Type - Molded, Wiring - T568A. P/N EEDD-C8XX-MYY - XX = Length - YY = Color

1 Foot Length	\$3.50	14 Foot Length	\$7.25
3 Foot Length	\$4.00	25 Foot Length	\$11.00
5 Foot Length	\$4.85	50 Foot Length	\$21.00
7 Foot Length	\$5.25	100 Foot Length	\$38.50
10 Foot Length	\$6.25		

CAT 6 Molded Patch Cables (blue, grey, green, purple & red)

2 Foot Length	\$7.40	15 Foot Length	\$17.50
3 Foot Length	\$7.85	20 Foot Length	\$19.00
5 Foot Length	\$10.40	25 Foot Length	\$21.00
7 Foot Length	\$12.95	50 Foot Length	\$36.00
10 Foot Length	\$16.95	100 Foot Length	\$65.00

Prices are the same for Straight Thru or Crossover Cables.

Bulk Cat 5e/6 Cable

Cat 5e, unshielded 4 pair, 24 AWG, solid cable (blue, grey or white)

PVC	1000 ft	MR5ED-4P-XX	\$169.00
Plenum FT6	1000 ft	MR5ED-4P-XX-FR	\$295.00

Stranded (black, grey, green, orange, purple, red, white and yellow)

PVC	1000 ft	MR5ESD-4P-XX	\$199.00
-----	---------	--------------	----------

Cat6 Unshielded, 4 pair, 24 AWG, solid cable (blue, grey or white)

PVC	1000 ft	MR6E-4P-XX	\$199.00
-----	---------	------------	----------

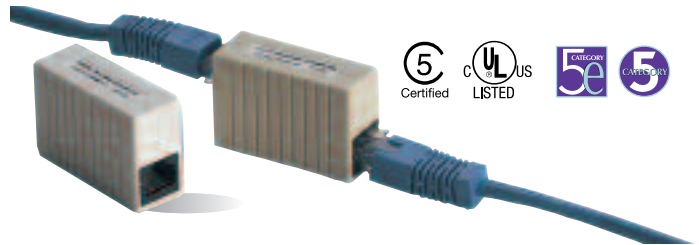


- Booted, Molded Assemblies, RJ45
- Stranded Conductor, 4 pair

AS LOW AS
\$3.25



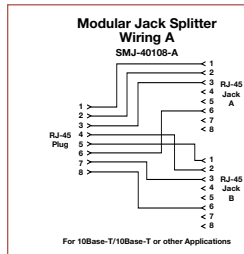
In-Line Coupler



Save time and money by using Unicom's Category 5 or Enhanced Category 5 In-Line Coupler and your existing Enhanced Category 5 or Category 5 patch cords. Also available in 16 and 32 port 19" rack mounted.

PART NUMBER	CAT.	DESCRIPTION	PRICE
ILC-UE08A-WT	5e	UTP, T568A/B, White	\$11.50
ILC-UE08A-BG	5e	UTP, T568A/B, Beige	\$11.50

Modular Jack Splitters



Now you can utilize previously unused cable pairs within your existing LAN system. The Modular Jack Splitter splits 4 cable pairs into 2 groups for the same or separate applications. It features a 4 inch pigtail for easy connection to either patch panels or wall outlets. The modular jack splitters meet TIA/EIA 568-A Category 4 standards.

SMJ-40108-A	T568A/B 10/Base-T/10Base-T 4" Pigtail	\$10.00
SMJ-50108A	Cat5e Splitter	\$15.00

Crossover CAT5ex Coupler



Now you can keep all of your cables straight thru and use the CAT5ex Coupler when you Need a Crossover!

CX5e		\$11.50
CX5e01	c/w 1 ft cable	\$14.50

Ethernet Surge Protectors



Model Number	Connectors	Extra Features	Price
570	RJ45 F/F	Inline Point of Use	\$75.00
580	RJ45 F/F	Inline Wiring Closet	\$95.00

For CAT5e/6 Patch Panels/Wallplates/Jacks and Rack Equipment, see Page 44

To Order: 1-800-668-3282

Fax: 1-800-668-3900
E-Mail: sales@altecon.com